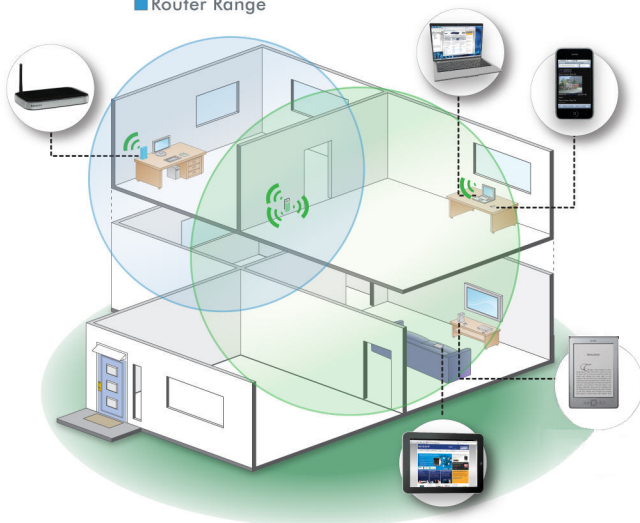


NETGEAR®

Connect with Innovation™

WiFi Booster for Mobile WN1000RP Installation Guide

■ Extended Wireless Range
■ Router Range



© 2012 NETGEAR, Inc. All rights reserved.

No part of this publication may be reproduced, transmitted, transcribed, stored in a retrieval system, or translated into any language in any form or by any means without the written permission of NETGEAR, Inc.

DO NOT stack equipment, or place equipment in tight spaces or in drawers. Be sure your equipment is surrounded by at least 2 inches of air space.

Technical Support

Thank you for choosing NETGEAR. To register your product, get the latest product updates, or get support online, visit us at <http://support.netgear.com>.
Phone (US & Canada only): 1-888-NETGEAR
Phone (Other Countries):
See http://support.netgear.com/app/answers/detail/a_id/984.

Trademarks

NETGEAR, the NETGEAR logo, and Connect with Innovation are trademarks and/or registered trademarks of NETGEAR, Inc. and/or its subsidiaries in the United States and/or other countries. Information is subject to change without notice. Other brand and product names are trademarks or registered trademarks of their respective holders. © 2012 NETGEAR, Inc. All rights reserved.

Statement of Conditions

In the interest of improving internal design, operational function, and/or reliability, NETGEAR reserves the right to make changes to the products described in this document without notice. NETGEAR does not assume any liability that may occur due to the use or application of the product(s) or circuit layout(s) described herein.

Hardware Features

The LEDs on the front show how the WiFi Booster is working.



Link Rate

This LED indicates a wireless connection between the WiFi Booster and the router.

- Green is best.
- Amber is good.
- Red is poor.



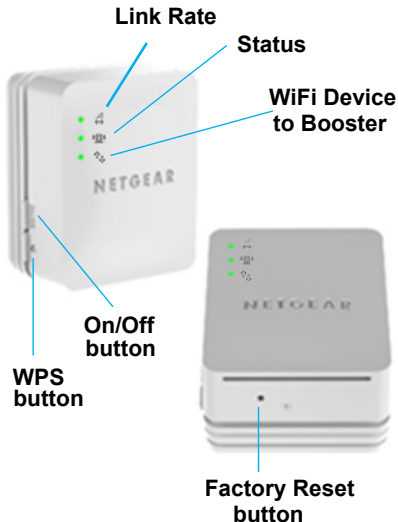
Status

This LED is lit when the WiFi Booster is powered on.



WiFi Device to Booster

The LED is lit when the WiFi Booster is connected to a PC or wireless device.



The side panel has the following features:

- **On/Off button.** Turns the device on and off.
- **WPS button.** Press the **WPS** button to wirelessly connect the WiFi Booster to your router or wireless adapter. All LEDs will be blinking when the WPS procedure starts.

The bottom panel has the Factory Reset button.

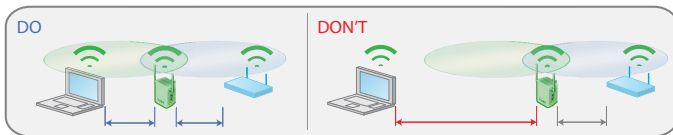
- **Factory Reset button.** To use this button, stick a paper clip into the reset hole and hold it until the Status LED flashes. Then wait for the Booster to reboot.

Getting Started


The WiFi Booster extends the wireless network to include the area outside the range of your existing WiFi network. Follow these steps to correctly set up the WiFi Booster.

Place the WiFi Booster and Apply Power

1. Place the WiFi Booster an equal distance between your router and the wireless device located outside the range of your router.



Tip: If you have to use a different location, move the WiFi Booster closer to the device, but still within the wireless range of the router.


2. Plug the WiFi Booster into an electrical outlet, and wait 1 minute until the WiFi Booster starts. The Status LED  turns green.

Connecting the WiFi Booster to an Existing WiFi Network

To extend the range of your WiFi network, you will need to connect the WiFi Booster to your existing WiFi network. You have two options to connect the WiFi Booster to your network.

Option 1: Connecting with WPS (Wi-Fi Protected Setup)

WPS lets you easily join a secure WiFi network without typing the network name and password. The WPS button is a physical button on the WiFi router, gateway, or access point.




If your router supports WPS (Wi-Fi Protected Setup ) , NETGEAR recommends that you use Option 1; otherwise, go to Option 2.

Tip: WPS does not support WEP network security.
If you are using WEP security, use Option 2 to connect.

Option 2: Connecting without WPS, using web browser setup guide

The web browser setup guide walks you through the necessary steps to connect your WiFi Booster to an existing WiFi network.

Option 1: Connecting with WPS (Wi-Fi Protected Setup)

1. Press the **WPS** button  on the WiFi Booster.
2. Within 2 minutes, press the **WPS** button  on your wireless router, gateway, or access point.
At this point, the WiFi Booster should be connected to your existing WiFi network, and the Link Rate LED  on your WiFi Booster lights up.
3. The WiFi Booster's wireless network name (SSID) changes to your existing WiFi network name, with **_EXT** at the end of the name.


For example:

Existing WiFi network name: MyNetworkName

New WiFi Booster network name: MyNetworkName_EXT

4. Now connect your existing WiFi devices to the new WiFi Booster network (MyNetworkName_EXT). Use the same network security key (passphrase) as is set on your existing WiFi network/WiFi router.

Option 2: Connecting with web browser setup guide

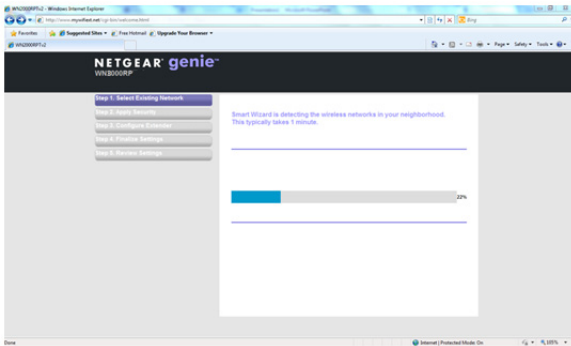
1. Once the WiFi Booster is powered on and the Status LED  is green, use a wireless network manager on a PC to find and connect to **NETGEAR_EXT** (SSID) wireless network.



Tip: You can use any wireless network manager utility on a laptop, tablet, or smartphone to find and connect to the WiFi Booster wireless network.

After the connection with the wireless device is established, the WiFi Device to Booster LED  turns green. Next, you need to connect the WiFi Booster to your existing WiFi network.

2. Open a web browser window from the same wireless device, and the browser will take you directly to the on-screen setup guide.



Tip: You can always access the WiFi Booster settings again by typing **www.mywifiext.net** in your browser URL bar. Note that you must be connected to the WiFi Booster/extended network for the setup guide to appear.





3. The web browser setup guide walks you through the following steps:
 - Selecting the existing WiFi network you would like to extend.
 - Entering the network security key for the existing network.
 - Choosing the name (SSID) for your new WiFi Booster/extended network.
 - Connecting your wireless devices to your new WiFi Booster/extended network.

Tip: If you have created a new network name (SSID) and network security key for the WiFi Booster/extended network, you will need to set up your wireless devices to connect to the new extended network.

4. If you want to make changes after using the web browser setup guide or you wish to run the setup guide again, use your browser to go to **www.mywifiext.net**. If prompted, log in as **admin** with **password** as the password.

WiFi Booster Performance

The Link Rate LED  indicates performance.

-  The best performance is delivered when the Link Rate LED is green.
-  A workable performance is delivered when the Link Rate LED is amber.
-  A red Link Rate LED indicates a poor connection or no connection.
-  If the Link Rate LED is off, there is no connection between the WiFi Booster and the router.

Tip: Make sure your WiFi Device to Booster LED is green before you check the Link Rate LED for performance.

To improve the WiFi Booster performance:

1. Move the WiFi Booster closer to the router or to a different location with a better line of sight.
2. As you move the WiFi Booster, check the Link Rate and the WiFi Device to Booster connection LEDs on the front panel until you find a good location.

When to Use the WiFi Booster Wireless Network

NETGEAR recommends that you connect to the WiFi Booster for Mobile wireless network only when a PC or wireless device is in a “dead zone” where the network connection to your existing router is very poor or nonexistent. This is because data traffic routed through the WiFi Booster wireless network is slower than traffic directly from the original wireless router network.

If you cannot connect from your wireless device to the WiFi Booster, move the WiFi Booster to a different location halfway between the device and the router. If, after you try several locations, the device cannot connect to the WiFi Booster, move the WiFi Booster closer to the device.

Wireless SSIDs and Passphrases

Use the space below to record your new WiFi Booster network name (SSID) and WiFi Booster security settings, in case you need to add additional wireless devices to your WiFi Booster in the future.

Enter your wireless information here:

Router Network Name (SSID) _____

Router Security Passphrase _____

WiFi Booster Network Name (SSID) _____

WiFi Booster Security Passphrase _____

Frequently Asked Questions

You can find more information about your product in the *User Manual* available at <http://support.netgear.com>.

- 1. The web browser setup guide keeps asking me for my network security key (passphrase), and I am sure I have entered the correct passphrase. What can I do?**

It is very likely that the WiFi Booster is placed at the borderline of the range covered by the router. Follow the instructions on page 11 to resolve this. If you are using WEP security, make sure that you are typing the wireless key in the correct field.

- 2. I connected to NETGEAR_EXT and launched a browser. Why can't I see the web browser setup guide?**

First, make sure your computer is set up to use DHCP (most are). Second, make sure the WiFi Device to Booster status LED is green and you have a valid IP address. Finally, re-launch the browser and enter **www.mywifiext.net**.

- 3. What are the user name and password to log in to the WiFi Booster?**

The user name is **admin** and the default password is **password**. Both are case-sensitive

Compliance

Declarations of Conformity

For complete DoC, visit the NETGEAR EU Declarations of Conformity website at:
http://support.netgear.com/app/answers/detail/a_id/11621.

For GNU General Public License (GPL) related information, visit
http://support.netgear.com/app/answers/detail/a_id/2649.



This symbol is placed in accordance with the European Union Directive 2002/96 on the Waste Electrical and Electronic Equipment (the WEEE Directive). If disposed of within the European Union, this product should be treated and recycled in accordance with the laws of your jurisdiction implementing the WEEE Directive.



NETGEAR, Inc.
350 East Plumeria Drive
San Jose, CA 95134 USA



201-14549-03

June 2012